

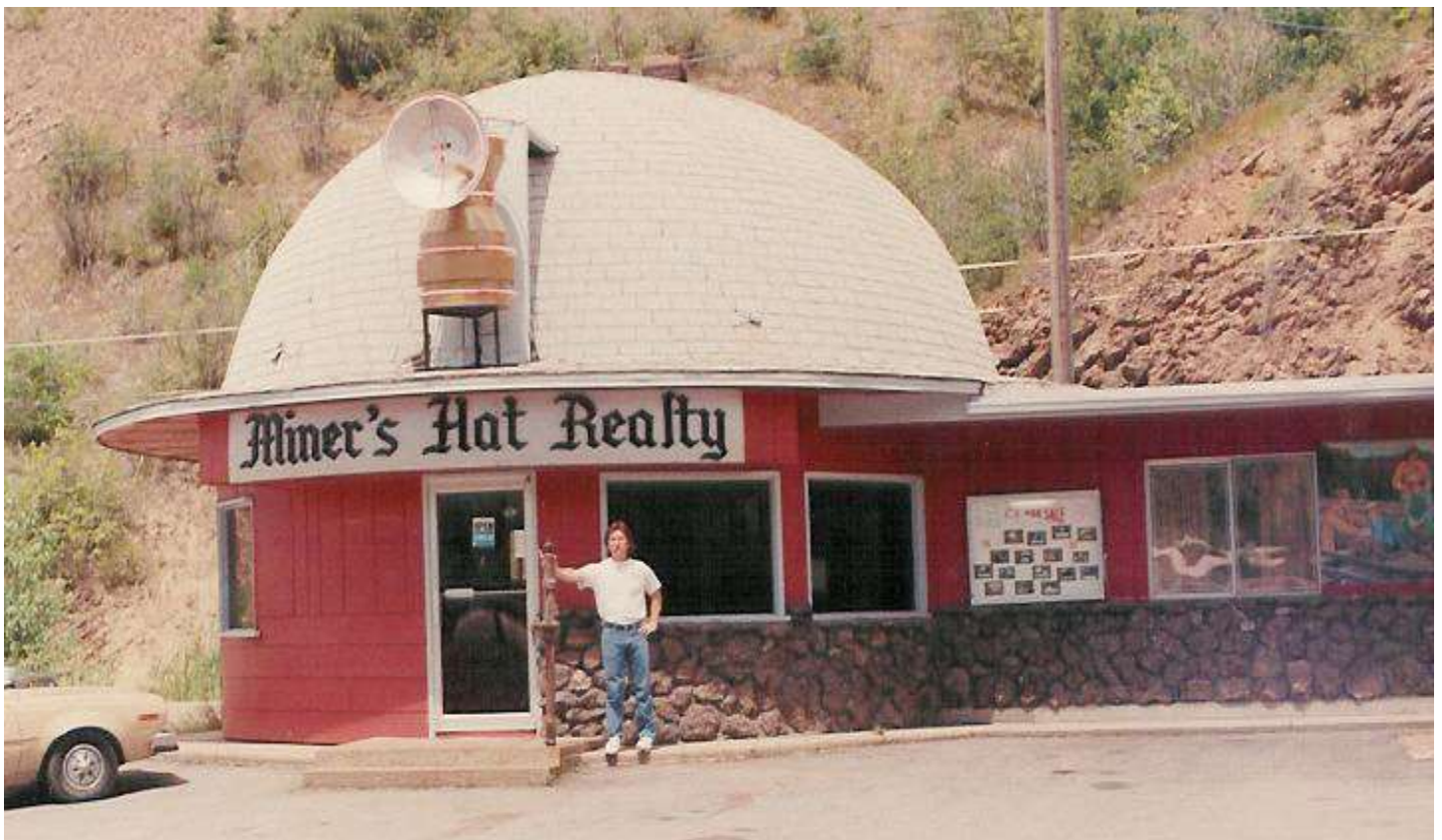


The Miner's Hat

Deric English, Boron, CA

These photos show the unique Miner's Hat building, now a real estate business. At one time it was a popular

drive-in restaurant. The building was constructed adjacent to Highway 10 in Kellogg during the late 1930s. The neon tube lighting system that creates the image of a carbide lamp is still burning, albeit with neon light. "Oldtimers" can remember stopping at the restaurant when



The author (Deric English) stands in front, ca. 1991.

Marietta Page was preparing "the best food in town." The kitchen was in the northwest side of the building and booths were arranged along the circular walls. The restaurant closed after Interstate 90 was completed in 1963. The structure was remodeled to its present business office status in 1971.

