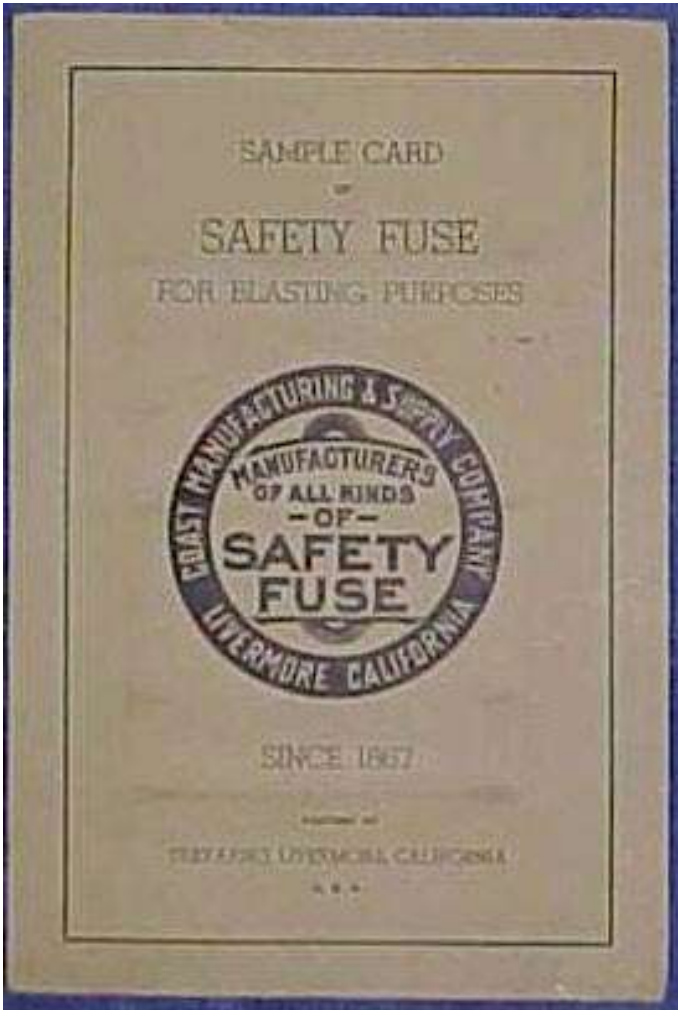


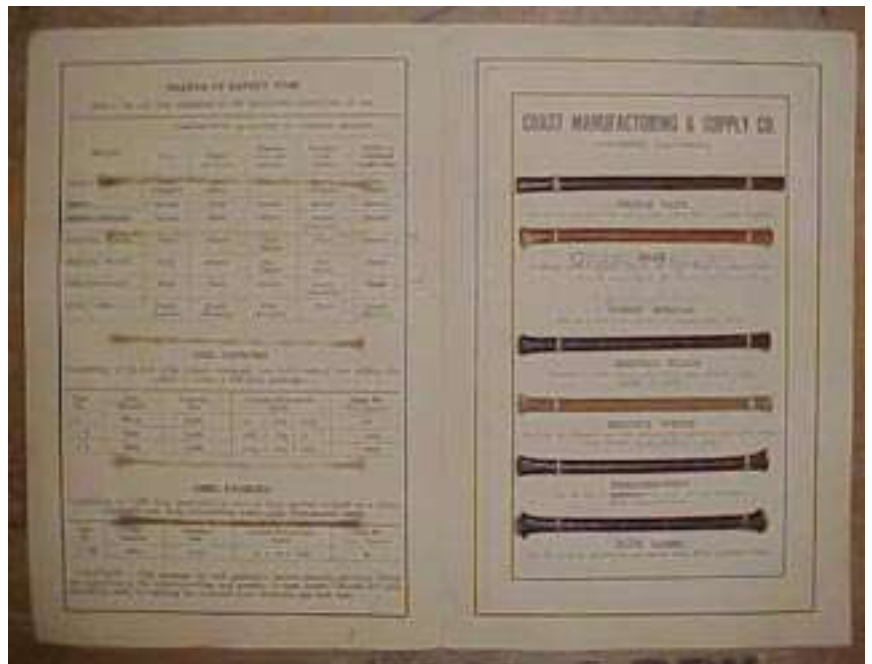
# Coast Manufacturing & Supply Co.

*by Todd Town*



While looking for the elusive mining artifact we go to great lengths and travel far to hunt down a treasure we can fondle when evening comes around. On occasion this search takes you to the individual who is starting to get rid of all the junk he has accumulated. You know the guy, he has never thrown away anything and neither did his dad. It can be overwhelming as you go from shed to shed, building to building making your way through five generations of automobiles and swing sets. Stacked in the corner of each building are broken pick handles, shovels and bull pricks, some so big I wonder if there are any real men left that could use one. And boxes of every conceivable household utensil and game boards. Finally finding the fifty pound powder box he knew he had with some of his mining stuff in it. The candle sticks, the carbides, the cap tins all in one box. The "payoff" How very cool as you crouch down looking and picking up the treasures. Thanks to those who never throw away anything! This very unusual sample card for safety fuse, not only does it advertise the types of fuse that Coast sells,

what fuse works best for what application, quantity of coil pack and reel pack, but the inside of the card contains four inch samples of each fuse type the miners could buy. And of course it was at the bottom of the box. Photos are worth a thousand words. Here are some photos of the fuse sample I picked up.



# COAST MANUFACTURING & SUPPLY CO.

LIVERMORE, CALIFORNIA



## TRIPLE TAPE

For use in very wet work and in places where foot is frequently handled.



## ORANGE BEAR SEQUOIA

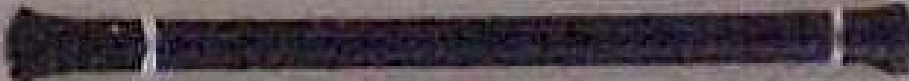
A plastic general purpose tape for wet work. White colored finish.

*not suited to Resistor Taping*

DISCONTINUED

## COMET SPECIAL

For use in wet work and in cool climates. Tape finish.



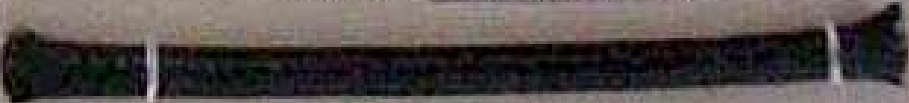
## SEQUOIA BLACK

Resistant to warm climates and heavy water pressure. It will "leak" or "leech"



## SEQUOIA WHITE

For very hot climates and with inflammable explosives and under heavy water pressure. It will "leak" or "leech"



## DREADNAUGHT

For all uses in ~~unusually~~ wet work and cool climates. Black Coloured finish.



## BLUE LABEL

For dry or damp agricultural and general work. Black colored finish.